

Monarch Butterfly

www.mother2motherblog.com

Facts about one of the most famous butterflies on the planet

Basic Information

Name: Monarch Butterfly

Scientific name: Danaus Plexippus

Plexippus

Average Life Span: 6 - 8 months

Diet: Herbivore

Facts on Monarchs

- **Female Monarchs lay eggs individually on the leaves of a milkweed plant. They lay approximately 300-500 eggs over a 2 - 5 week period. Milkweed is poisonous. It stays in the Monarch's system and makes them toxic to predators**

Sadly, milkweed is no longer being planted by farmers. Eastern Monarchs have declined by 80% and Western Monarch 99%. So, home and community gardeners and cities are being asked to plant milkweed to help the Monarchs rebound.

- **Eggs hatch into caterpillars. They only eat milkweed, which is why the female Monarch only lay their eggs on milkweed.**

Caterpillars grow quickly. They eat milkweed for 2 weeks. Afterwards, they hang in a J and spin a protective case around themselves called a chrysalis.

- **It takes approximately 2 weeks for the caterpillar to complete their metamorphosis, and emerge as a black and orange adult Monarch butterfly.**

During the metamorphosis process, the chrysalis will change from a jade green and yellow to clear.

When it turns clear, you can see the orange and black colors and pattern developing of the butterfly.



History of being most studied butterfly!

Monarch Butterflies are famous for their seasonal migration. Millions of them migrate from the United States and Canada to California and Mexico for the winter.



- **After the Monarch emerges from the chrysalis, it will find a place to hang so it allow its wings to fill with fluid and dry. Afterward, they will take flight. This process usually take 2 - 3 hours before the enter into the world as an adult Monarch.**

Adults feed on nectar from blooming native plants, including milkweed. A Monarch lives approximately 6 - 8 months.



MONARCH BUTTERFLY

Life Cycle



MONARCH BUTTERFLY

Life Cycle



- **Stage1 - (Eggs) Female Monarch lay approximately 300 - 500 eggs on milkweed.**
- **Stage2 - (Caterpillar or Larvae) Hatchlings turn into caterpillars. For 2 weeks, they eat the milkweed they were hatched on. The caterpillars will grow rapidly.**
- **Stage3 - (Chrysalis or Pupa) After 2 weeks, the caterpillars are ready for the metamorphosis process. The caterpillars will hang from silk in a selected spot and spin a green and yellow chrysalis (pupa) around themselves. After 2 weeks, the chrysalis will turn clear. The transformation has taken place, you can clearly see the black and orange colors and pattern forming.**
- **Stage4 - (Adult Butterfly) The Monarch Butterfly will emerge from the chrysalis as an adult. It will hang for several hours once emerges to dry its wings and prepare for flight.**



Complete the Sentences

Fill in the blank with the words below

Monarch Butterflies _____ their skin 5 times.

Monarch caterpillars are striped with yellow, _____ and white markings.

Monarch caterpillars only eat _____.

_____ stopped planting milkweed.

Milkweed is _____ to humans.

Female Monarch lay _____ on the underside of milkweed leaves.

The color of the Monarch chrysalis is _____ and _____.

Monarchs hang from a wade of _____.

The chrysalis will turn _____ in approximately 10 – 14 days.

The chrysalis is also called a _____.

Monarchs migrate to _____ and _____.

Monarchs travel up to 2 _____ during their migration.

Monarchs _____ the milkweed to ensure it's okay to lay their eggs.

Monarchs are becoming _____.

clear

months

pupa

toxic

California

eggs

milkweed

black

taste

jade

Mexico

yellow

sheds

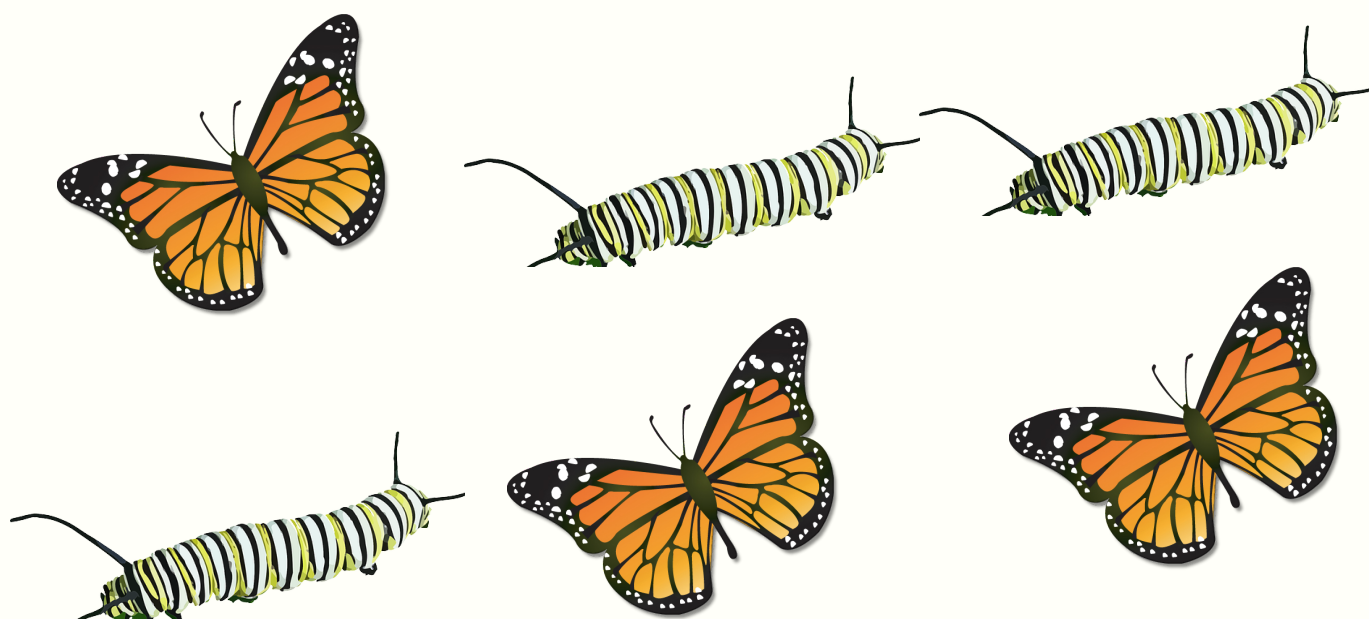
extinct

farmers

Mother 2 Mother Blog

COUNTING MONARCHS AND CATERPILLARS

WWW.MOTHER2MOTHERBLOG.COM



Directions: Count how many of each insect you see.

Write the answers in the box provided below.

--	--

Single Digit Addition

Let's add the numbers!



$$\begin{array}{r} 6 \\ +3 \\ \hline \end{array}$$

$$\begin{array}{r} 2 \\ +4 \\ \hline \end{array}$$

$$\begin{array}{r} 5 \\ +1 \\ \hline \end{array}$$

$$\begin{array}{r} 8 \\ +2 \\ \hline \end{array}$$

$$\begin{array}{r} 7 \\ +3 \\ \hline \end{array}$$

$$\begin{array}{r} 2 \\ +7 \\ \hline \end{array}$$

$$\begin{array}{r} 9 \\ +1 \\ \hline \end{array}$$

$$\begin{array}{r} 5 \\ +2 \\ \hline \end{array}$$

$$\begin{array}{r} 6 \\ +4 \\ \hline \end{array}$$

$$\begin{array}{r} 2 \\ +2 \\ \hline \end{array}$$

$$\begin{array}{r} 5 \\ +7 \\ \hline \end{array}$$

$$\begin{array}{r} 7 \\ +2 \\ \hline \end{array}$$

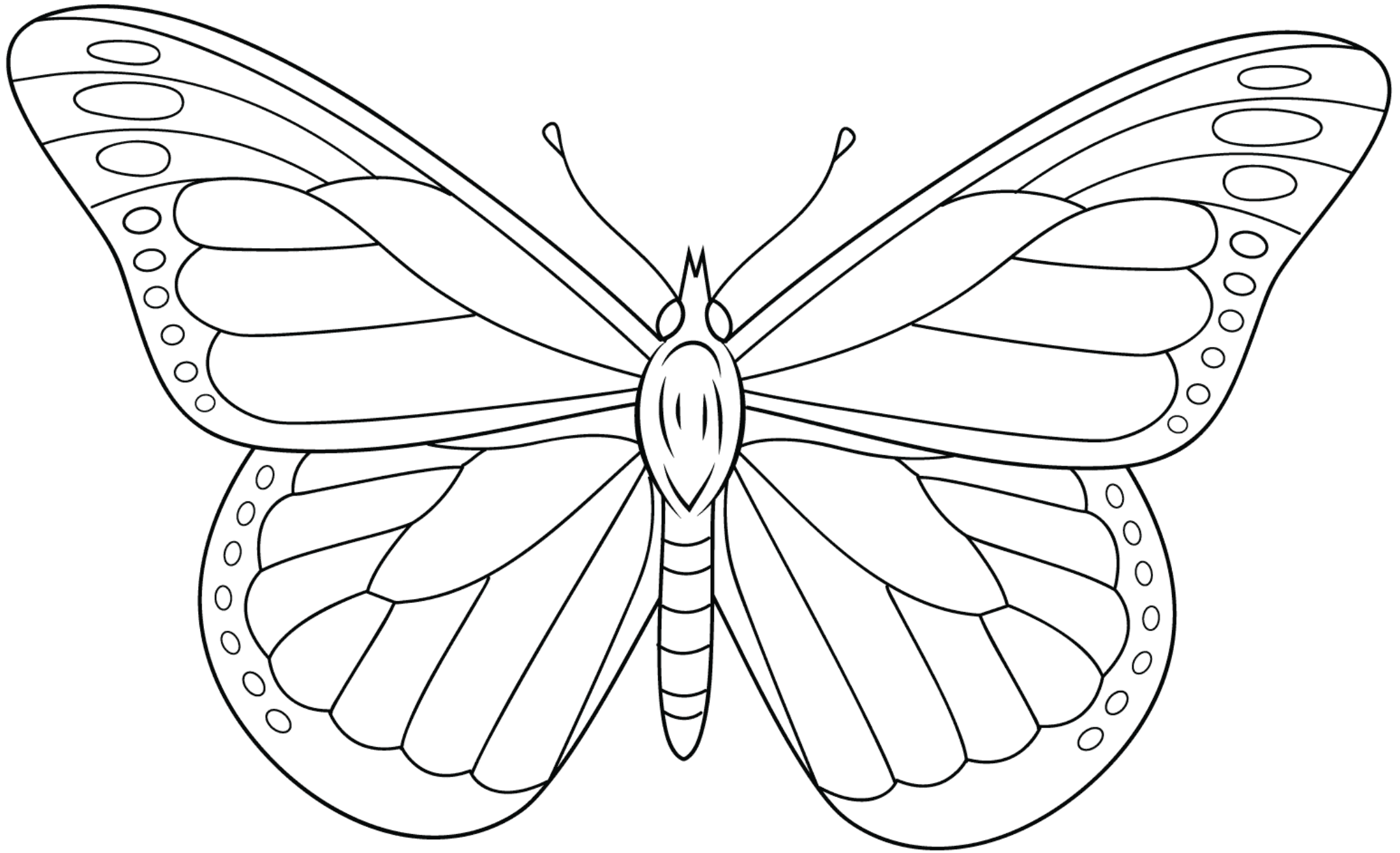
$$\begin{array}{r} 5 \\ +3 \\ \hline \end{array}$$

$$\begin{array}{r} 2 \\ +9 \\ \hline \end{array}$$

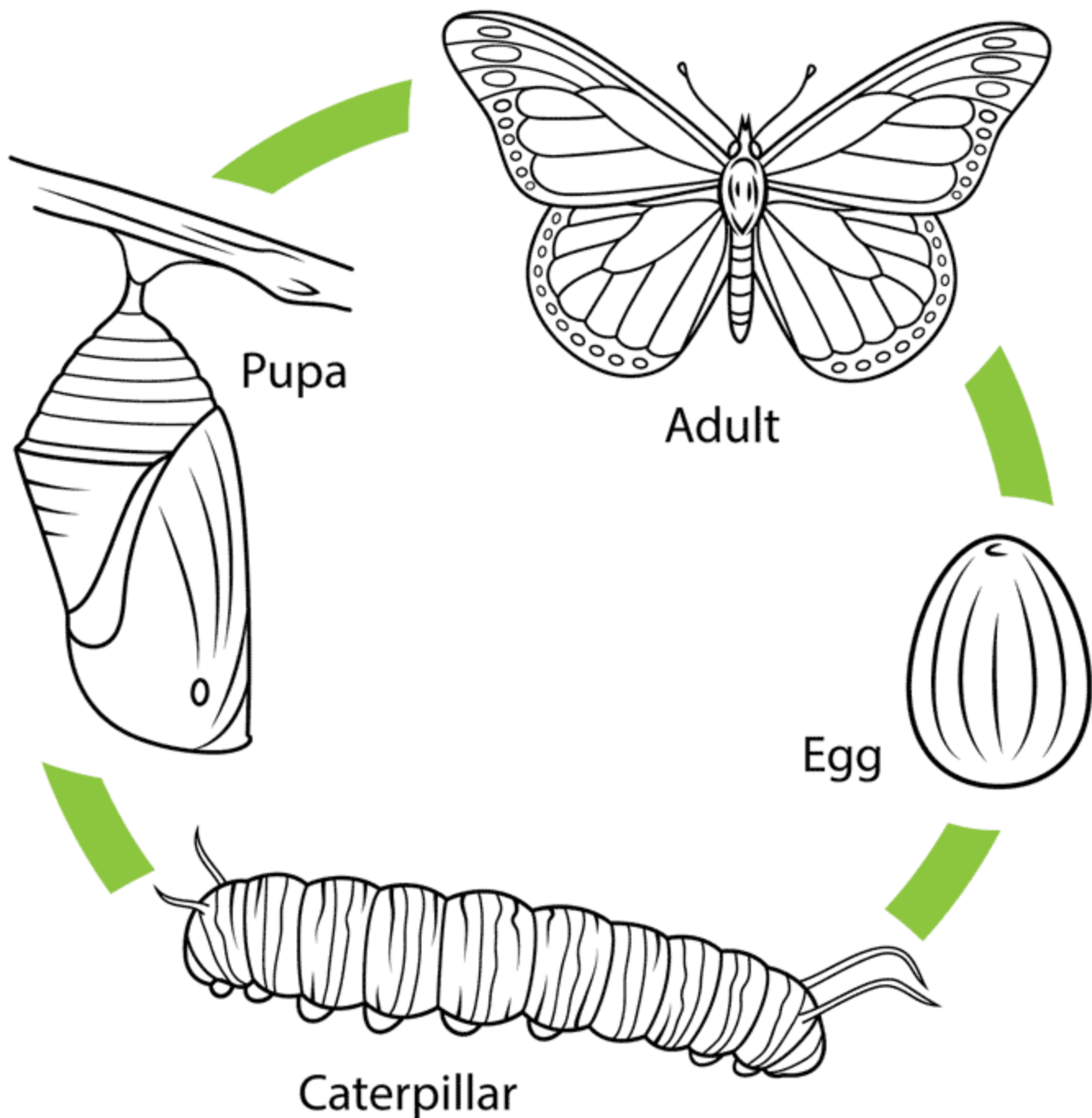
$$\begin{array}{r} 4 \\ +1 \\ \hline \end{array}$$

$$\begin{array}{r} 5 \\ +7 \\ \hline \end{array}$$





Life Cycle of a Monarch Butterfly





Monarch Butter Word Search



C O O Q Q L A R V A E C H M O N A R C H
 A M E X I C O S D W W G P T A J Y N L M
 L M T N O H K A B H C W H I T E P W V H
 I T N C J B N B O L D U Y I R Q S U B S
 F U X Q S A Y W V D A E P V G G W G P J
 O O F Y C N P V O N N C Q K G N J N G A
 R V P M A T D Y Q D C Y K E L Y O V J P
 N B G M I L K W E E D E T N C L R J S X
 I V W C A A L R K G H M I G L A A G G O
 A N O D B M J U D J G I R F Q S N U W F
 S K V R Q U Y J N N B N W M O I G K D Y
 T L M G H A T C H L I N G X W F E X P N
 D R J Q F X G T C A T E R P I L L A R E
 H H Q M G D Y E E M N Y P D Q A Z M Y C
 N W D S I K C S V R X Y T X A P F B Q T
 T Y E E N G Y B O Z F D T O Y P M I T A
 M H E G M Z R K D S I L K M P B Y W O R
 S X Y K Y Z Q A A G E M Y V D B V X H V
 O F E G N Y L H T U A E S H E D G A Q G
 J J P F I C H D N E M C H R Y S A L I S

BUTTERFLY

MONARCH

EGGS

MILKWEED

SHED

MEXICO

SILK

HATCHLINGS

CATERPILLAR

CHRYSLIS

WINGS

NECTAR

CALIFORNIA

CANADA

MIGRATE

LARVAE

PUPA

BLACK

ORANGE

WHITE

Mother 2 Mother Blog